

Contents

NPDES PHASE II PERMIT BACKGROUND	2
SCHEDULE B, 2.0 ANNUAL REPORTING REQUIREMENTS	2
<i>B.2.a Status of Compliance with permit conditions</i>	2
B.2.b Information Collected and Analyzed	3
B.2.c Major Goals for FY 2014	3
B.2.d Changes to the SWMP	4
B.2.e. Annexations.....	4
B.2.f Reliance on other government entities to satisfy some permit obligations	4
B.2.g Number and Nature of Enforcement Actions	4
1200C and 1200CN PERMITS	5
3.0 Conclusion	5
PROGRAM-AT-A-GLANCE	6

APPENDICES

APPENDIX A: Documentation of Rogue Valley Sewer Services NPDES Phase II Activities

APPENDIX B: Annual Reports from RVSS' Ph II Communities

APPENDIX C: Annual Report from Rogue Valley Council of Governments

ANNUAL REPORT

NPDES PHASE II PERMIT Number 102899 AND 1200C PERMITS for FISCAL YEAR 2014

Cities of Central Point, Phoenix, Talent and portions of Jackson County

NPDES PHASE II PERMIT BACKGROUND

Rogue Valley Sewer Services (RVSS) entered into an agreement with the cities of Central Point, Phoenix and Talent and with Jackson County (known as the RVSS Phase II Communities) to manage the NPDES Phase II permit in 2006. The program consists of six key measures: Public Education and Outreach; Public Involvement and Participation; Illicit Discharge Detection and Elimination; Construction Site Stormwater Runoff Control; Post-Construction Stormwater Management; and Pollution Prevention in Municipal Operations. The existing permit, number 102899, expired on January 31, 2012, prior to which RVSS submitted an application for renewal on June 27, 2011. However, no new permit has been issued, thus RVSS is continuing to run its NPDES program under the expired permit. This annual report follows the original Stormwater Management Program from 2004. All minimum control measures listed as a part of the original permit were continued in FY 2014. In addition, although the permit for renewal has not been approved, RVSS has begun some new minimum control measures described in the renewal application, and plans to continue these in FY 2015 (see section B.2.c).

SCHEDULE B, 2.0 ANNUAL REPORTING REQUIREMENTS

B.2.a Status of Compliance with permit conditions

RVSS has initiated effectiveness assessments in conformance with the Phase II Program Effectiveness Guidance received from DEQ. Effectiveness assessment was initiated by RVSS to help develop and implement a successful stormwater program. RVSS is following the California Stormwater Quality Association (CASQA) guidance document titled "Municipal Stormwater Program Effectiveness Assessment Guidance" and the "Program Effectiveness Strategy" from DEQ. A measurable goals/effectiveness category is used in the "Program at a Glance" spreadsheet to assess progress on the Phase II Program and the 1200C Permit. RVSS concludes that RVSS' Phase II Program and 1200C Permit are in compliance, appropriate and progressing toward achieving their measurable goals.

For a detailed report of RVSS BMP's and their effectiveness assessment, see the "Program-at-a-Glance" spreadsheet and for documentation of RVSS' activities see Appendix A. Major accomplishments for FY 2014 are listed below.

- Exhibited a booth on Low Impact Development at the City of Talent's Harvest Festival 10-5-13. Collected surveys from 80+ residents on their knowledge of stormwater.
- Hired Maria Cahill of Green Girl Consulting to teach a class for engineers and architects on using Low Impact Development for stormwater management in challenging sites.

- Continued implementation of a dry-season illicit discharge monitoring program on Jackson and Griffin Creeks in Central Point. Identified and removed one cross connection from a sanitary sewer line to a stormwater line. Identified and worked with a property owner to remove a direct connection from a swimming pool back flush system to Griffin Creek.
- RVSS' Stormwater Program Coordinator, Jennie Morgan, was interviewed by News Watch, Channel 12 News regarding Public Health advisories posted for Jackson and Griffin Creeks following RVSS' sampling and analyses.
- RVSS' Stormwater Program Coordinator, Jennie Morgan, was interviewed about the Stormwater Program by Geoffrey Riley on the Jefferson Public Radio show the Jefferson Exchange.
- Stormwater Program Coordinator presented the findings from the 2014 Illicit Discharge monitoring program to the Bear Creek Watershed Council, the Bear Creek TMDL working group and RVSS' staff.

B.2.b Information Collected and Analyzed

RVSS continues to hold twice yearly Erosion and Sediment Control (ESC) Inspector classes for the Rogue Valley, these classes help to increase contractor, municipal staff and engineer knowledge of the NPDES program, 1200C and 1200CN requirements, and to install and maintain appropriate ESC BMPs. Pre and post-testing is used to assess the effectiveness of the classes, in FY2014 the class averages improved by 31 and 35% as a result of the class.

RVSS continued dry-season sampling of stormwater outfalls in FY14, this year sampling in Jackson and Griffin Creeks in Central Point. Samples were collected from flowing outfalls and analyzed for *E. coli* concentrations. Stormwater outfalls with *E. coli* concentrations over the single sample standard of 406cfu/100ml were investigated to determine a cause for the high *E. coli* concentration.

B.2.c Major Goals for FY 2015

- Hold a Low Impact Development Training aimed at those who maintain the LID stormwater management features, to help them properly operate and maintain the features.
- Work with the Low Impact Development Technical Advisory Committee to create a Low Impact Development Design Manual for small communities in Western Oregon.
- RVSS will be developing a Standard Operating Procedure for inspecting post-construction stormwater quality features, both manufactured and LID BMPs, to ensure they are properly installed, and will also develop maintenance standards for LID features.
- Continue the dry-season illicit discharge monitoring program aimed at identifying hotspots.
- Implement the newly developed stormwater quality structure sampling program to assess the effectiveness of manufactured stormwater quality structures in removing sediment, oil and grease from stormwater runoff. Stormwater sampling will be conducted throughout the year using automated samplers.

- Increase flood storage capacity and improve stormwater treatment through restoration of an existing stormwater wetland in the City of Talent. This stormwater wetland has filled with sediment and vegetation over the years such that it causes street flooding and no longer functions effectively for stormwater quality improvement.
- Contracted with RVCOG to work with City of Talent Police and Fire Departments to identify BMPs for vehicle washing that eliminate runoff to the stormwater system.
- Continue serving on DEQ's Technical Advisory Committee for the Phase II permit renewal, with the goal of developing an effective, implementable permit in the next year.

B.2.d. Changes to the SWMP

No changes to the BMPs or measurable goals outlined in the 2004 SWMP were undertaken in FY 2014. However, some minimum control measure programs described in the renewal application were started.

B.2.e. Annexations

No annexations occurred in the cities of Central Point, Talent or Phoenix, or in Jackson County during FY 2014.

B.2.f Reliance on other government entities to satisfy some permit obligations

The cities and county hold Intergovernmental Agreements (IGA) with RVSS that specify that the cities and county are responsible for implementing, monitoring and providing documentation to RVSS for the Pollution Prevention in Municipal Operations portion of the permit. Annual reports from the cities to RVSS are included in Appendix B. In addition, RVSS contracts with RVCOG for some of the public education elements of the Stormwater Management Plan, see Appendix C for a detailed report of their activities.

In 2012, Central Point requested a modified IGA with RVSS reducing the amount of compensation provided to RVSS, as a result of the decreased compensation, responsibility for stormwater quality capital improvements has been transferred from RVSS to the City. In 2013, Central Point again requested a modification to the IGA with RVSS further reducing the compensation provided to RVSS to run the Phase II program. Consequently, Central Point is now responsible for Public Education and Involvement activities within their city.

B.2.g Number and Nature of Enforcement Actions

RVSS Phase II Communities have developed and implemented measures to ensure compliance with the Phase II Permit. Over the last five years, RVSS has focused its efforts on developing, adopting and implementing ordinances, implementing and updating the stormwater quality design manual, adapting education programs, providing brochures, and adapting an enforcement strategy for issuing stop work orders and/or monetary penalties. The number and nature of enforcement actions in FY 2014 are:

- RVSS issued 7 Brown Tags and one Stop Work Order
- One Notice of Non-Compliance with a fine of \$250 was assessed against HLT Inc. for Non-compliance with Rogue Valley Sewer Services Code 4.05, specifically concrete washout in a stormwater drain.
- Four hotline calls were received for illicit discharges within RVSS' MS4 boundaries. RVSS worked with the responsible parties to achieve resolution.

- Two calls were received on RVSS' hotline for illicit discharges outside our MS4 boundaries, one of which RVSS requested the caller report to OERS and the other RVSS worked with Oregon State Police to investigate, but were unable to resolve.
- After being on hold for a year, in FY14 RVSS resumed implementation of the Fats, Oils and Grease (FOG) program for a total of 284 businesses, with only one new facility added in FY14. In FY 2014, 91 businesses were inspected, of which violations were documented in 52. Twenty-three businesses corrected the violations within the year.

1200C and 1200CN PERMITS

On September 1, 2006, RVSS became a DEQ Agent responsible for issuing, inspecting and enforcing the 1200C permits in RVSS Phase II Communities. In 2011, RVSS met with DEQ to assist in the rewrite of the 1200C Permit. The new 1200C Permit allows RVSS to issue its own permit for disturbances between 1 and 5 acres, now known as the 1200CN, or locally as the RVSS Construction Permit. The vast majority of projects in RVSS' Phase II boundary are individual developments under one acre in size, therefore RVSS does not issue many 1200CN permits. See Appendix A, Section 5.0 for a list of current and terminated 1200C and CN permits in FY 2014.

In addition to taking on responsibility for issuance of the 1200C program, RVSS has implemented additional measures, shown below, which have significantly improved compliance with the 1200C and CN Permits:


Major Accomplishments for FY 14

- Worked with City of Phoenix to overcome hurdles to issuance of small site permits for construction projects less than one acre.
- Held two Erosion and Sediment Control Inspector Trainings for a total of 34 contractors, engineers and public works employees, which resulted in an average 33% increase in knowledge based on pre and post-tests.

3.0 Conclusion

RVSS and its Phase II Communities have again made exceptional progress in the implementation of the NPDES Phase II Permit and the management of the 1200C Permits. DEQ did not provide review or input into the effectiveness of RVSS' program in Fiscal Year 2013, however RVSS has continued to work toward increasing the effectiveness of the BMPS outlined in the existing Stormwater Management Plan. The attached Program-at-Glance describes RVSS' Programs in more detail. As backup for this annual report, RVSS has detailed documentation for meetings attended, presentations given, Operations and Maintenance activities, a 1200C database, enforcement database, etc. Any of this information, can be made available to DEQ upon request.

Stormwater Implementation “Program-at-a-Glance” FY 2014

Program Area	Regional Guide Measures	Responsible Party	Implementation Tasks from SWMP	Measurable Goals/Effectiveness (Levels 1 to 5 from CASQA)	Goal(s) Achieved?/ Levels 1,2,3,4,5	Accomplishments, proposed changes and plans for the coming year
1.0 Fiscal Analysis	Secure the financial resources	RVSS Manager	Stormwater Utility Fee to cover RVSS efforts to manage NPDES program	Provide Stormwater Utility Fund revenues and expenditures in each Annual Report. Level 1 – meets funding requirement Level 2 – funds allow changes to happen thru program Level 3 – program changes behavior	Yes/Levels 1,2,3	FY 14 - Revenues and expenses for SW Utility Fund: Total revenues of \$246,309 compared to expenses of \$140,045. Does not include staff time & expenditures by Ph II Communities. FY 15 – Adopted budget includes revenues and expenses for SW Utility Fund. Total projected revenues of \$242,500 compared to anticipated expenses of \$224,673. Does not include staff time and other expenditures provided by RVSS Phase II Communities.
2.1 Public Education	Develop a Stormwater Education and Outreach Strategy (2.3.1)	Stormwater Advisory Team (SWAT) Including Cities of Medford and Ashland	Develop 5 year Strategy.	SWAT to meet at least quarterly to determine the effectiveness of program. Make any changes when needed. Level 1 – conduct & document meetings Level 2 – raise Phase II communities’ awareness of program Level 3 – RVSS Phase II communities changed behaviors by developing a SWQ Strategy, changed behaviors in entire watershed by continuing SWAT meetings to get consensus, using Design Manual and having other non-Phase II cities asking about our program. Many of these cities are considering adopting portions of the SWQ Program.	Yes/Levels 1,2,3	FY 14 – <ul style="list-style-type: none"> Quarterly SWAT meetings were held this year at which the regional Salmon Watch program was determined to be the primary regional education program. This program is offered throughout the Rogue Valley through RVCOG; RVSS provides teaching assistance to communities in RVSS’ jurisdiction. RVCOG develops and implements numerous additional public education and outreach activities through financial support from RVSS, see Appendix C for a complete report of their activities. FY 15 – Continue quarterly SWAT meetings to continue to discuss SW issues. SWAT is currently working to put on a spill response training for municipal public works employees to be held in Oct. 2014.
2.2 Public Education	Stormwater Brochure for the General Public (2.3.2)	RVSS Stormwater Program Coordinator	Develop Stormwater Brochure for regional cities	Development and distribution of SWQ Brochure and discuss SWQ issues in RVSS Newsletter. Make any changes when needed. Level 1 – develop & document brochures, newsletters and news/magazine articles Level 2 – change attitudes, knowledge & awareness Level 3 – change behaviors	Yes/Levels 1, 2, 3 RVSS’ hotline calls and investigations over the years: 2008 = 6, 2009 = 15, 2010 = 14, 2011 = 20, 2012 = 13 2013 = 7 2014 = 6	FY 14 – <ul style="list-style-type: none"> Approximately 1,000 brochures were printed and distributed within RVSS Phase II Communities in 2014, of which one brochure is a general brochure on stormwater management. Central Pt Issued quarterly newsletters with articles on stormwater to Central Pt households. The reduction in hotline calls we hope is a reflection of successful education efforts and fewer issues in the area. FY 15 - Continue to update and distribute brochures, and issue newsletters when possible.
2.3 Public Education	Targeted Stormwater Brochures (2.3.3)	RVSS Stormwater Program Coordinator in coordination with RVCOG	Determine targeted groups through SWAT Develop brochures for erosion control (see Section 5.6) and targeted brochures for homeowners describing development requirements. 	Develop erosion control brochure and include in all building permits by Year 3. SWAT agreed to create brochures for additional targeted groups. Level 1 – document brochures produced Level 2 – raise Phase II communities’ awareness of program Level 3 – RVSS Phase II communities change behaviors with targeted brochures, building permits, letters and presentations	Yes/Levels 1,2,3	FY14 - RVSS and RVCOG distributed 1,000 of the following brochures that include hotline numbers within the RVSS Phase II Communities: <ul style="list-style-type: none"> Stormwater Management Erosion and Sediment Prevention Stream and Wetland Enhancement Guide Taking care of streams in Jackson County Painting Without Polluting Creeks and Concrete Don’t Mix Oil and Stormwater Yard Card at Home RVSS talked with as well as sent letters and brochures to residents and contractors as needed. FY 15 – Continue to update and distribute brochures.

Stormwater Implementation “Program-at-a-Glance” FY 2014

Program Area	Regional Guide Measures	Responsible Party	Implementation Tasks from SWMP	Measurable Goals/Effectiveness (Levels 1 to 5 from CASQA)	Goal(s) Achieved?/ Levels 1,2,3,4,5	Accomplishments, proposed changes and plans for the coming year
2.4 Public Education	Storm Drain Stenciling (2.3.4)	RVSS will coordinate efforts with RVSS Phase II Communities	RVSS will ensure the development of a program for storm drain inlet stenciling, inspections, and maintenance Require all new developments to mark storm drains for no dumping.	<ul style="list-style-type: none"> Develop program to complete by end of permit term using staff and volunteers by stenciling 20% each Year. Contact volunteer organization(s); provide locations and materials for marking catch basins. Develop ordinance requiring storm drains to be marked when constructed. Check drains to ensure all are marked at end of permit period. Level 1 – document number of markers installed and develop ordinance Level 2 – raise Phase II communities’ awareness not to dump in storm drain Level 3 – Phase II communities adopt maintenance plan for markers	Yes/Levels 1,2,3	FY 14 – RVSS Ph II communities, Medford and Ashland have developed ordinances and/or are conditioning projects to require new developments to mark drains. Approximate estimate of percent completed: CP 100%, Phoenix 100%, Talent 100%, and Jackson County 100%. FY 15 – RVSS Ph II communities will maintain storm drain markers; any missing or damaged markers will be replaced.
2.5 Public Education	Promote Water Quality Education with School Districts (2.3.5)	RVSS Stormwater Program Coordinator will coordinate and promote through SWAT.	Work with local organizations and school districts to develop a water quality education program. Use Rogue Valley Regional NPDES Phase II Stormwater Program Guide.	Contact all school districts within the Phase II boundary. Goals will be based on approach chosen to assist educators. Level 1 – conduct & document activities Level 2 – raise Phase II communities’ awareness of program/pollutants Level 3 – documentation of increased awareness	Yes/Levels 1,2, 3 Pre and post-tests showed 33% increase in knowledge from Salmon Watch classes.	FY 14 – <ul style="list-style-type: none"> RVCOG administered a Salmon Watch and Streamwise program for 3 classes, RVSS taught Salmon Watch classes three times and Central Point taught Salmon Watch to four classes for a total of 343 students reached. RVSS used its watershed model at the Bear Creek Watershed Education Partners (BCWEP) Symposium reaching ~200 students. RVCOG and other partners had many displays, presentations and educational activities throughout the year, see Appendix C for a detailed list of activities, dates and numbers reached. FY 15 – Continue to conduct classroom activities in partnership with BCWEP, RVCOG and others when requested. Continue to demonstrate and/or loan watershed model at events.
2.6 Public Education	Work with Volunteer Groups on Stormwater Education Projects (2.3.6)	RVSS Stormwater Program Coordinator	RVSS will work with volunteer groups in the Phase II communities to discuss opportunities for education projects.	Assist volunteer groups contacting SWAT. Contact at least 5 volunteer organizations to discuss and promote SWQ education. Same as 2.5	Yes/Levels 1,2	FY 14 – <ul style="list-style-type: none"> RVCOG worked with the Jobs council to provide training on water quality monitoring, also assisted scout groups in implementing water quality and stormwater enhancement projects, to name a few. For a complete list of activities with volunteer groups see Appendix C. RVSS has chaired the Bear Creek Watershed Council since 2013 and supports and coordinates with the council on all stormwater related public education activities. City of Central Point put on a rain garden workshop attended by three residents, one of which was from Central Point. FY 15 – Continue to meet with BCWC & BCWEP for education opportunities and other volunteer groups to continue to determine the best education approach for stormwater quality.




Stormwater Implementation “Program-at-a-Glance” FY 2014

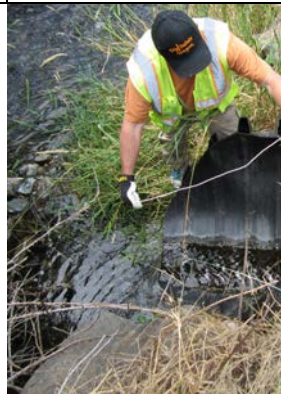
Program Area	Regional Guide Measures	Responsible Party	Implementation Tasks from SWMP	Measurable Goals/Effectiveness (Levels 1 to 5 from CASQA)	Goal(s) Achieved?/ Levels 1,2,3,4,5	Accomplishments, proposed changes and plans for the coming year
2.7 Public Education	Develop a Stormwater Speakers Bureau (2.3.7)	SWAT Members	Stormwater Presentation in the RVSS Phase II Communities	Keep records of stormwater presentations including number of attendees or number of times program is presented. Same as 2.5	Yes/Levels 1,2	<p>FY 14 -</p> <ul style="list-style-type: none"> RVSS gave presentations on our IDDE program at the Bear Creek Watershed Council, Bear Creek TMDL working group and RVSS, dates and attendance are documented in Appendix A Sections 2 and 3. RVCOG either hosted presenters or gave presentations on stormwater topics at least seven times to 94 professionals in the Phase II area. <p>FY 15 –</p> <ul style="list-style-type: none"> Rotate leadership of SWAT meeting between RVSS, Medford & Ashland. Continue to present stormwater quality presentations as needed. Continue to conduct new Designated Erosion and Sediment Control Inspectors Class for the RVSS Construction Permit and 1200C permit. SWAT, RVCOG and other Phase II communities will give stormwater quality presentations in the local area upon request.
2.8 Public Education	Create Stormwater Public Service Announcements (PSA's) (Optional 2.3.8)	None assigned.	PSA's	Not required, but will record any that occur each year. Same as 2.2	Yes/Levels 1,2,3	<p>FY 14 –</p> <ul style="list-style-type: none"> RVSS Stormwater Program Coordinator was interviewed about the stormwater program by Geoffrey Riley for the Jefferson Exchange on Jefferson Public Radio show. Additionally, Coordinator was interviewed by Channel 12 News regarding a PSA on high E. coli in Jackson and Griffin Creeks. Dates are included in Appendix A section 3.0. <p>FY 15 – Look for opportunities to send out news releases, newsletter or other PSA's such as RVSS' Newsletter with articles on Phase II program and 1200C Permit.</p>
2.9 Public Education	Design a Stormwater Display (2.3.9)	RVSS Stormwater Program Coordinator	Develop displays on stormwater education and exhibit them.	RVCOG and Cities have displays of SWQ materials Same as 2.2	Yes/Levels 1,2,3	<p>FY 14 –</p> <ul style="list-style-type: none"> RVSS exhibited a display on Low Impact Development at the Talent Harvest Festival, a local community festival in Talent. 69% of surveyed individuals from RVSS' jurisdiction know that SW flows directly to creeks. RVSS also supported the Bear Creek Watershed Council's education programs Kids and Bugs and their salmon education booth at Earth Day. RVCOG exhibited numerous displays at public events throughout the year, see Appendix C for a complete report. <p>FY 15 – Continue displays and demonstrate educational model at community events.</p>
2.10 Public Education	Create Stormwater Website (2.3.10)	RVSS Stormwater Program Coordinator	Coordinate with other Phase II Cities to include information on SWQ on web pages.	RVSS to improve website in FY 09 with links to SWQ information for Ph II communities and include 1200C permit information. Hotline numbers seem to be working as RVSS receives more calls for stormwater violations. Same as 2.2	Yes/Levels 1,2,3	<p>FY 14 – RVSS stormwater website is active and contains information on the Phase II program, 1200C permit program, and stormwater design manual. Erosion control class notices are posted on the website.</p> <p>FY 15 – RVSS plans to revamp its website in FY15 to improve usability. Additionally, RVSS has taken the lead in developing a regional Stormwater website called <i>Stream Smart</i>.</p>
3.1 Public Involvement	Public Review /Public Meetings (3.3.1)	RVSS Stormwater Program Coordinator	Encourage public involvement and participation in stormwater quality activities.	Hold at least one public meeting and publish two public notices on stormwater related issues yearly Same as 2.1 & 2.2	Yes/Levels 1,2,3	<p>FY 14 – RVSS attended quarterly and monthly meetings of BCWC, Bear Creek TMDL, Rogue Basin TMDL, SWAT and ACWA Stormwater Committee, all of which are open to the public, at which RVSS discussed their stormwater program and any proposed changes. Public notices were published as noted in 2.8.</p> <p>FY 15 – Continue to participate in public meetings.</p>

Stormwater Implementation “Program-at-a-Glance” FY 2014

Program Area	Regional Guide Measures	Responsible Party	Implementation Tasks from SWMP	Measurable Goals/Effectiveness (Levels 1 to 5 from CASQA)	Goal(s) Achieved?/ Levels 1,2,3,4,5	Accomplishments, proposed changes and plans for the coming year
3.2 Public Involvement	Distribute News Releases (3.3.2)	RVSS Manager	Issue news articles on stormwater quality related issues	Issue news release story on Stormwater Same as 2.1 & 2.2 also RVSS' program recognized by EPA	Yes/Levels 1,2,3	FY 14 – Same as 2.8 above, plus <ul style="list-style-type: none"> RVCOG was interviewed by Channel 10 News on water quality RVCOG was interviewed for a story on “Bacteria Woes Force More Summer Creek Closures” published in the Mail Tribune 7-31-14 FY 15 - RVSS expects to issue a newsletter explaining the renewed Ph II program, when that occurs.
3.3 Public Involvement	Stormwater Advisory Team (3.3.3)	SWAT Members	Stormwater advisory panel consisting of key staff from each Phase II community to coordinate regional efforts	Dates and attendance records of quarterly meetings including topics discussed and key decisions. Same as 2.2	Yes/Levels 1,2,3	FY 14 - Meetings were held 7/17/13, 10/16/13, 1/15/14, 4/16/14 and were attended by six to 12 people including representatives from the cities of Medford, Ashland, Central Pt, Eagle Pt, Phoenix, Talent, Rogue River, Gold Hill and Jackson County. FY 15 - Continue SWAT meetings at least quarterly to continue regional approach including cities of Medford, Ashland, and Eagle Pt and invite Grants Pass and other cities in local area. Rotate chairmanship of meetings.
4.1 Illicit Discharge Program	Storm Sewer System Map (4.3.1)	RVSS Manager	Create a storm sewer system map showing all known storm drain outfalls to receiving water. Adaptive Management - Expand maps as funds available to include catch basins and areas protected by SWQ features.	Map and field-verify the location of all known storm drain outfalls to receiving waters. Adaptive Management - Expand storm system maps in all Phase II Community areas to include catch basins and protected areas. Update as funds available. Level 1 – develop stormwater facility maps, document number of stormwater facilities, and material removed Level 2 – raise Phase II communities' awareness by using maps for education Level 3 – implement inspection and maintenance schedule	Yes/Levels 1,2,3,	FY 14 - RVSS Phase II Communities have met this measurable goal. Adaptive Management - RVSS Ph II communities will continue to update storm sewer maps when funds are available. Jackson County has many areas that do not have underground pipes but road side ditches. FY 15 – RVSS Ph II communities will continue to update storm sewer maps when funds are available. RVSS will continue to document the locations of newly installed stormwater quality features.
4.2 Illicit Discharge Program	Ordinance to Prohibit Non-Stormwater Discharges (4.3.2)	RVSS Manager	Develop and adopt Stormwater Ordinance to prohibit non-stormwater discharges.	Adopt ordinance and continue to monitor for any revisions needed to prohibit Non-Stormwater discharges. Level 1 – adopted ordinance Level 2 – raise Phase II communities' awareness when responding to questions about the ordinance Level 3 – Behavior change or BMP implementation when ordinance is enforced	Yes/Levels 1,2,3	FY 14 - RVSS continues to implement RVSS' Stormwater Ordinance through education, notices, stop work orders and monetary penalties for illicit discharges. FY 15 - Continue to implement ordinance and monitor for any revisions needed.
4.3 Illicit Discharge Program	Detect and Address Non-Stormwater Discharges (4.3.3)	RVSS Stormwater Program Coordinator	Develop Illicit discharge plan per Regional Guide and include in Ordinance. Jackson County, Talent and Central Point have no formal illicit detection plan	Develop and implement Illicit Discharge Program including the following: <ul style="list-style-type: none"> Identify priority areas Field assessment activities Routine schedule of inspections Characterize discharges found Procedures to trace discharge Procedures to remove discharge Level 1 – Illicit Discharge Plan and FOG Plan developed Level 2 – Plan allows changes to happen Level 3 – Program changes behavior	Yes/Levels 1,2,3	FY 14 –Continued to implement the Fats, Oils and Grease (FOG) program for a total of 252 businesses, as documented in the RVSS Fats, Oils and Grease Inspection Program Overview. Six hotline calls were received and investigated of which four were resolved by RVSS. Two were located outside RVSS' Phase II boundaries and RVSS referred one to OERS but investigated another with Oregon State Police. FY 15 – Continue to implement FOG, Spill Response and IDDE Programs with revisions as needed for RVSS Phase II Communities. Continue documentation and inspection of stormwater quality features. Work with RVCOG, cities and county to better utilize their employees for inspection and documentation.

Stormwater Implementation “Program-at-a-Glance” FY 2014


Program Area	Regional Guide Measures	Responsible Party	Implementation Tasks from SWMP	Measurable Goals/Effectiveness (Levels 1 to 5 from CASQA)	Goal(s) Achieved?/ Levels 1,2,3,4,5	Accomplishments, proposed changes and plans for the coming year
4.4 Illicit Discharge Program	Conduct Field Inspections (4.3.4)	RVSS Stormwater Program Coordinator	Conduct field inspections in accordance with Illicit Discharge Plan in 4.3	Inspect each outfall on a three-year rotation and take appropriate action when illicit discharge is found. Level 1 – document inspections Level 2 – raise Phase II communities’ awareness about the storm system Level 3 – require cleanup of discharge Level 4 – pollutants reduced with IDDE monitoring plan	Yes/Levels 1,2,3,4	FY 14 – <ul style="list-style-type: none"> RVSS designed and continued implementation of a dry season monitoring plan for stormwater outfalls. The entire lengths of Jackson and Griffin Creeks in Central Point were walked and flowing outfalls along were sampled for <i>E. coli</i>. Follow-up investigations were conducted on outfalls with <i>E. coli</i> over the 406cfu/100ml standard for single samples. As a result of this program, one cross connection between the sanitary and storm sewers was removed and one direct connection of swimming pool back flush line to Griffin Creek was removed. <p>FY 15 – RVSS will continue dry-season sampling of stormwater outfalls, throughout our MS4 area. RVSS Phase II Communities will also continue to inspect outfalls for illicit discharges during maintenance activities.</p>
4.5 Illicit Discharge Program	Spill Response Plan (4.3.5)	RVSS Manager	Develop, implement and enforce a spill response plan.	Adopt Regional Spill Response Plan. Adaptive Management - include equipping RVSS vehicles with spill control equipment and teaching maintenance crew how and when to use the kits. Level 1 – document inspections Level 2 – raise Phase II communities’ awareness not to dump in storm drain Level 3 – require cleanup of discharges Level 4 – pollutants reduced with stormwater quality features	Yes/Levels 1,2,3,4	FY 14 – RVSS Initiated a review of Ph II communities spill response plans and determined that there is a need for further training of public works crews. RVSS began work to organize a regional spill response training. FY 15 – Continue to implement spill response plan and continue to respond to hotline calls for spills. Hold regional spill response training in October 2015.
4.6 Illicit Discharge Program	Plan for Enforcement Actions (4.3.6)	RVSS Manager	Develop or revise current ordinance to prohibit illicit discharges including addressing enforcement actions and spill responses	Adopt and implement ordinance for illicit discharges. Same as 4.5 	Yes/Levels 1,2,3	FY 14 – RVSS Phase II Communities have met this measurable goal. Adaptive Management - Implemented and enforcing ordinance. RVSS has focused on education to remind citizens that any spill goes directly to the local creeks and RVSS now has the responsibility to enforce. RVSS will continue to follow enforcement policy of education, notices and then monetary fines for violations that cause pollutants to enter the stormwater system. FY 15- Continue to implement and enforce ordinance including issuing fines when pollutants enter stormwater system and responding to hotline calls.
4.7 Illicit Discharge Program	Train Municipal Staff on Spill and Illicit Discharge BMPs (4.3.7)	RVSS Manager	Train municipal staff on proper BMPs and illicit discharge detection and removal. Train any new staff.	Record number of hours of training for staff Same as 4.5	Yes/Levels 1,2,3	FY 14 –No formal trainings were provided in 2014 however, municipal staff were trained in previous years. FY 15 – Organize and hold a regional spill response training.



Stormwater Implementation “Program-at-a-Glance” FY 2014

Program Area	Regional Guide Measures	Responsible Party	Implementation Tasks from SWMP	Measurable Goals/Effectiveness (Levels 1 to 5 from CASQA)	Goal(s) Achieved?/ Levels 1,2,3,4,5	Accomplishments, proposed changes and plans for the coming year
5.1 Construction Site Program	Adopt an Erosion and Sediment Control Ordinance (5.3.1)	RVSS Manager	Adopt ESC Ordinance in 4.2 that will include requirements for projects disturbing at least 1 acre.	Adopt Design Manual by Dec 2005 and Ordinance by June 2006. Reviewed RVSS Phase II Communities ordinance for conflicts to RVSS Ord. RVSS will be DEQ's agent responsible for permit reviews, inspections, and enforcement. Level 1 – document permits, inspections & enforcement Level 2 – raise awareness at construction site not to dump in storm drain Level 3 – require cleanup of discharges and enforce fines Level 4 – pollutants reduced through BMP installation and maintenance	Yes/Levels 1,2,3,4	FY 14 –RVSS became DEQ's Agent on September 1, 2006 responsible for reviewing, issuing and enforcing DEQ 1200C permits, requiring pre-construction meetings, inspecting sites, issuing notices for violations, other enforcement actions and approving termination. Subsection 4.05.110 of the stormwater ordinance was amended in 2011 to include RVSS' issuance of 1200CN permits for sites between one and five acres. FY 15- Continue to manage 1200CN and 1200C Permits, enforce Stormwater Ordinance, track permits and adapt ordinance as needed.
5.2 Construction Site Program	Train Plan Reviewers and Field Inspectors (5.3.2)	RVSS Stormwater Program Coordinator and DEQ/RVCO G	Train staff responsible for reviewing plans and inspecting construction.	Document and report the number of hours spent on training. Level 1 – document permits, inspections & enforcement Level 2 – require a certified erosion control inspector for every project Level 3 – require cleanup of discharges and enforce fines Level 4 – pollutants reduced	Yes/Levels 1,2,3,4 Knowledge level raised through classes based on pre-test scores of 61 and 54% and post-test scores of 92 and 89%.	FY 14 – RVSS revised its erosion and sediment control inspector classes to include field installation of BMPs. One class each was held on 11-21-13 and 5-13-2014 and were attended by 33 contractors, engineers and government employees for a total of 200 training hours. RVSS inspectors also provided additional training to contractors in the field because many contractors & home builders do not have a good understanding of erosion and sediment controls for construction projects and will not take time to attend classes offered. Three employees from Central Point and one from RVSS attended the erosion and sediment control training. FY 15 - Continue education of contractors, engineers and municipal staff.
5.3 Construction Site Program	Review Site Plans for Erosion and Sediment Controls. (5.3.3)	DEQ for first two years then RVSS Manager	Review plans for proper use of ESC BMP's and post construction ESC. Review plans to ensure they are in compliance with local ordinances and SW Design Manual.	Review plans to ensure they are in compliance with local ordinances including SW Design Manual and issue permits. Monitor the number of permit reviews. Level 1 – adopt ord. & document reviews Level 2 – raise builders' awareness not to dump in storm drain Level 3 – require cleanup of discharges Level 4 – pollutants reduced	Yes/Levels 1,2,3,4	FY 14 – RVSS became DEQ's Agent on September 1, 2006 and continues to review erosion and sediment control plans prior to issuing the RVSS Construction and 1200C permits. RVSS requires a pre-construction meeting to ensure BMP's are installed prior to ground disturbing activities, conducts inspections and conducts site visit prior to approving termination. In FY 14, four 1200-CN permits were issued, one was renewed and seven were terminated. In addition, one 1200C permit was terminated. FY 15 – RVSS as DEQ Agent will continue to review, inspect, and enforce RVSS Construction and 1200C Permits. RVSS will continue to require pre- construction meetings to ensure BMPs are properly installed.
5.4 Construction Site Program	Receive Information from Public (5.3.4)	RVSS Stormwater Program Coordinator or Public Works Director for Ph II communities	Receive and document public calls on SWQ issues from construction sites. Several brochures list phone numbers for the public to report SWQ issues such as construction activities.	Develop system to record calls from public. Record number of calls from public, record resolutions and document for annual report. Level 1 – document hotline calls Level 2 – raise Phase II com. awareness not to dump in storm drain Level 3 – require cleanup of discharge Level 4 – pollutants reduced	Yes/Levels 1,2,3,4	FY 14 - RVSS has a Hotline number and record keeping and continues to respond to and resolve ID calls. FY 15 - RVSS will continue Hotline number record keeping and responding to calls including documentation of call resolution.

Stormwater Implementation “Program-at-a-Glance” FY 2014

Program Area	Regional Guide Measures	Responsible Party	Implementation Tasks from SWMP	Measurable Goals/Effectiveness (Levels 1 to 5 from CASQA)	Goal(s) Achieved?/ Levels 1,2,3,4,5	Accomplishments, proposed changes and plans for the coming year
5.5 Construction Site Program	Inspect Construction Sites (5.3.5)	RVSS Stormwater Program Coordinator	Hold pre-construction site meetings to ensure proper installation of BMPs. Inspectors will ensure that ESC BMP's submitted are installed and maintained throughout project.	Record inspections, violations and follow up work needed and document for annual report. Level 1 – document inspections, violations and use stop work orders and fines Level 2 – raise construction contractors awareness not to dump in storm drain Level 3 – require cleanup of discharges, which changes behavior Level 4 – pollutants reduced	Yes/Levels 1,2,3,4	FY 14 – Conducted pre-construction inspections and numerous on-site verbal discussions with contractors. RVSS continued to focus heavily on inspections of construction sites issuing brown tags, stop work orders and monetary penalties for violations. In addition to the verbal discussions RVSS issued 8 Brown Tags, one stop work order and one Notices of Non-Compliance with a fine. In addition to the 1200CN permits, small site Storm Drain Permits for sites < 1 acre were issued: Central Pt issued 49 and Talent issued 23. FY 15 – RVSS will continue to randomly inspect permitted construction sites and issue brown tags, stop work orders and monetary penalties, when necessary, especially during the rainy season to encourage the contractor's ESC Inspector's to be more proactive, and to ensure stormwater quality is protected. Record Stop Work Orders, Brown Tags, NONC and other enforcement activities.
5.6 Construction Site Program	Provide Information on Training for Construction Operators (5.3.6)	RVSS Manager	Provide training for construction personnel using brochures and classes on construction site and post-construction site controls.	Document the distribution of training materials on ESC, attendance in ESC training classes and provide in annual report. Level 1 – document training classes and include in annual report Level 2 – raise contractor's awareness of Phase II and 1200C permit requirements Level 3 – change behavior Level 4 - pollutants reduced	Yes/Levels 1,2,3,4 ESC Certification Class included pre-testing with an average score of 72% and post-testing with an average score of 97%.	FY 14 –RVSS sent announcements of ESC trainings to 45 engineering and architecture firms, construction contractor and government offices. Erosion and Sediment Control Inspector classes were conducted 11-21-13 and 5-13-2014 and were attended by 33 contractors, engineers and government employees for a total of 200 training hours. RVSS was a significant contributor to the ACWA Construction Site Stormwater Guide produced in 2013, a field guide to erosion and sediment control, which has been distributed in class and in the field. FY 15 – Continue to conduct certification classes and document knowledge increase. Continue education in the field with more encouragement, stop work orders, or monetary penalties, to encourage ESC Inspectors to take charge and be proactive. Continue to provide ACWA Field Guide.
6.1 Post-Construction SW Program	Ordinance Requiring Post-Construction Control (6.3.1)	RVSS Manager	Adopt an ordinance that requires post-construction runoff controls.	RVSS to adopt post-construction control ordinance. 	Yes	FY 14 – Subsection 4.10.010 of RVSS' code includes the Rogue Valley Stormwater Design Manual, which requires stormwater quality features to be installed. The cities of Medford and Ashland have also adopted the Rogue Valley Stormwater Quality Design Manual. There are now 111 post-construction SW quality features in RVSS' Phase II area. FY 15 – Continue to implement and enforce Design Manual for post- construction runoff protection. Document stormwater quality features installed by location, type, and expected maintenance procedures including features installed by RVSS. Assist other cities in their review of RVSS' Design Manual if requested.
6.2 Post-Construction SW Program	Develop a Plan to Address Post-Construction Runoff (6.3.2)	RVSS Manager	Adopt SWQ Design Manual including post construction BMP's	<ul style="list-style-type: none"> • Adopt ordinance • Adopt Design manual Same as 5.1 Level 1 – document permits, inspections & enforcement Level 2 – raise awareness at construction site not to dump in storm drain Level 3 – require cleanup of discharges and enforce fines Level 4 – pollutants reduced through BMP installation and maintenance	Yes/Levels 1,2,3,4	FY 14 - Continued to implement Design Manual that requires installation of stormwater quality features, manage RVSS Construction Permit and manage 1200C Permit as DEQ Agent. RVSS has begun revising the Design Manual in anticipation of new regulations requiring on-site infiltration of stormwater and more use of Low Impact Development (LID) technology. Accomplishments thus far have included getting all MS4's in the valley to agree to applying the Design Manual to development and redevelopment sites 2,500sf or larger and to require LID technology on type A and B soils. FY 15 - RVSS is part of the Technical Advisory Committee that is developing a Low Impact Development Manual for western OR. We anticipate that this manual will update a large portion of our current Design Manual.

Stormwater Implementation “Program-at-a-Glance” FY 2014

Program Area	Regional Guide Measures	Responsible Party	Implementation Tasks from SWMP	Measurable Goals/Effectiveness (Levels 1 to 5 from CASQA)	Goal(s) Achieved?/ Levels 1,2,3,4,5	Accomplishments, proposed changes and plans for the coming year
6.3 Post-Construction SW Program	Training Plan Reviewers and Field Inspectors (6.3.3)	RVSS Manager	Train staff responsible for reviewing plans and inspecting construction site for post-construction stormwater management.	Document and report the number of hours spent on training. Level 1 – create SOP for plan review Level 2 – raise contractor and engineers awareness of post-construction stormwater control options	Yes/Levels 1,2	FY 14 – <ul style="list-style-type: none"> • Post-construction stormwater management plans are reviewed by RVSS’ District Engineer and SW Coordinator to ensure they comply with the Design Manual. Several webinars on LID topics were hosted by RVCOG for engineers, municipalities and contractors. • Additionally, RVSS held a training on Low Impact Development design techniques attended by 22 Engineers and Architects. • RVSS developed a Standard Operating Procedure for inspecting post-construction stormwater features to ensure they are properly installed and maintained. FY 15 - RVSS will hold a training for owners and operators of LID SW features on proper operation and maintenance techniques.
6.4 Post-Construction SW Program	Site Plan Review for Post-Construction BMPs (6.3.4)	RVSS Manager	Review plans to ensure they are in compliance with local ordinances and SW Design Manual. Review will include proper use of ESC BMP’s and post-construction ESC.	Adopt Ordinance and Design Manual. The number of reviews, along with staff time, will be documented and reported annually. Level 1 – adopted ord. & documented reviews. Level 2 – raised engineers & architects awareness to meet stormwater ord. Level 3 – require post-construction stormwater Level 4 – pollutants reduced by stormwater quality features in new developments	Yes/Levels 1,2,3,4	FY 14 – RVSS reviewed and approved stormwater management plans for seven developments within RVSS’ jurisdiction. Additionally, following construction, features were inspected to ensure their installation was consistent with site plans. FY 15 – RVSS will continue to review plans for stormwater management features as they come into our office and will continue to conduct post-construction inspections.
6.5 Post-Construction SW Program	Inspection of Structural Post-Construction BMP’s (6.3.5)	RVSS Manager	Inspect sites to ensure post-construction BMPs are installed and maintained correctly.	Record inspections, violations and follow up work needed for SWQ and document for annual report. Develop maintenance procedures to ensure structural BMP’s work properly. Level 1 – adopted ord. & documented reviews. Level 2 – raised engineers & architects awareness to meet stormwater ord. Level 3 – require post-construction stormwater Level 4 – pollutants reduced by stormwater quality features in new developments	Yes/Levels 1,2,3,4	FY 14 – Continued implementation of Stormwater Ordinance and record keeping system to track structural BMP’s installed in RVSS Phase II Communities. RVSS inspected 19 stormwater quality features and maintained 19 removing ~6CY of sediment and 1.74 CY of trash. Details are available in Section 6.0 of Appendix A. FY 15 – RVSS plans to develop Standard Operating Procedures for maintenance of stormwater quality features including LID features. Once the SOP is created, RVSS will conduct annual inspections of all features in Phase II. Continue to document new structures installed by new developments. Verify manufacturer’s maintenance procedures for structures and document revisions as necessary.

Stormwater Implementation “Program-at-a-Glance” FY 2014

Program Area	Regional Guide Measures	Responsible Party	Implementation Tasks from SWMP	Measurable Goals/Effectiveness (Levels 1 to 5 from CASQA)	Goal(s) Achieved?/ Levels 1,2,3,4,5	Accomplishments, proposed changes and plans for the coming year
7.1 Pollution Prevention in Municipal Operations Program	Operations and Maintenance Plan (7.3.1)	RVSS Manager working with PWD for Ph II	O&M Plan shall include: <ul style="list-style-type: none"> Description of maintenance activities List of responsible departments and persons Schedule of activities Review maintenance of parks and open spaces Review and record herbicide and pesticide uses 	Develop O&M Plan Implement O&M Plan and track use of herbicides and pesticides. Level 1 – develop and adopt maintenance plan Level 2 – raise municipal staff’s knowledge and awareness Level 3 – require staff to install BMPs	Yes/Levels 1,2,3	FY 14 – RVSS Ph II Communities completed the evaluation of Municipal Pollution Prevention/Good Housekeeping Practices developed by Center for Watershed Protection and included in Manual 9. It was determined that more training was needed in spill response and RVSS began organizing a training. Working with RVSS Ph II Communities to better document maintenance activities as related to stormwater quality. Revised reporting form for RVSS Phase II communities. Continued to implement Spill Response Plan. Herbicide/pesticide application in 2014: Central Point – 70 gallons Jackson County - 27.2gal Phoenix – 22.25 gal Talent – 3.3 gal FY 15 – RVSS Ph II Communities, Medford and Ashland will begin a detailed review of the ODOT Manual to determine whether their own O&M Plans need updating. Continue to work on spill response plans and documentation.
7.2 Pollution Prevention in Municipal Operations Program	Park and Open Space Maintenance (7.3.2)	Public Works Directors of Phase II jurisdictions	Same as 7.1	Develop O&M Plan Implement O&M Plan and track use of herbicides and pesticides. Level 1 – develop and adopt maintenance plan Level 2 – raise municipal staff’s knowledge and awareness	Yes/Levels 1,2	FY 14 – See 7.1 for O&M Plan. Talent maintains 13 pet waste stations and distributed 8,000 doggy bags. Central Pt maintains 23 pet waste stations and distributed 63,000 bags. Phoenix maintains pet waste stations at three parks and used 12,000 doggy bags. For herbicide and pesticide use see paragraph 7.1 above. FY 15 – RVSS Ph II Communities, Medford and Ashland will begin a detailed review of the ODOT Manual to determine whether their own O&M plans need updating. Document maintenance activities. Continue to find locations for pet waste stations.
7.3 Pollution Prevention in Municipal Operations Program	Vehicle and Equipment Washing (7.3.3)	RVSS Manager working with Public Works Directors of Phase II jurisdictions	O&M Plan shall include: <ul style="list-style-type: none"> Description of maintenance activities List of responsible departments and persons Schedule of activities Review maintenance of parks and open spaces 	<ul style="list-style-type: none"> Central Point – self-contained veh wash fac with filtration sys – Operation will be in O&M Plan Jackson Co – covered self-contained veh wash fac with settling tank to sanitary sewer. Solids tested. Operation will be in O&M Plan Talent – brush off and washing at PW with discharge to overland release. Operation will be in O&M Plan and will follow De minimis requirements for 1700B permit. Phoenix - Phoenix constructed covered veh wash facility. Operation will be in O&M Plan. RVSS- Use private wash or RVSS facility that includes oil/water separator. Effectiveness: Same as 7.2	Yes/Levels 1,2	FY 14- Phase 2 Communities continue to meet wash requirements. FY 15- RVSS has contracted with RVCOG in 2015 to evaluate car washing BMPs of the police and fire departments in the City of Talent.

Stormwater Implementation “Program-at-a-Glance” FY 2014

Program Area	Regional Guide Measures	Responsible Party	Implementation Tasks from SWMP	Measurable Goals/Effectiveness (Levels 1 to 5 from CASQA)	Goal(s) Achieved?/ Levels 1,2,3,4,5	Accomplishments, proposed changes and plans for the coming year
7.4 Pollution Prevention in Municipal Operations Program	New Construction and Land Disturbances (7.3.4)	RVSS Manager and PWD for Ph II	Inspect permitted construction sites for SWQ violations	Record inspections, violations and follow up work needed for SWQ and document for annual report. Level 1 – adopt ord. & document installation, violations & inspections Level 2 – raise contractors’ awareness to meet stormwater ord. Level 3 – require contractors to install BMPs Level 4 – pollutants reduced by installing and maintaining stormwater quality features	Yes/Levels 1,2,3,4	FY 14 - As of 12/1/10 RVSS Phase II Communities must obtain an RVSS Construction permit for construction disturbing 1 to 5 acres or 1200C Permit for 5 acres or more – see measure 5 above. Jackson Co has a 1200CA Permit with RVSS inspecting construction in RVSS Phase II area. RVSS holds a 1200CA and has conducted several projects under this permit in the last year. Inspection records are available on request. FY 15 – RVSS will continue as a DEQ Agent and will continue to inspect public construction projects for proper BMP installation and maintenance.
7.5 Pollution Prevention in Municipal Operations Program	Dust Control Practices (7.3.5)	RVSS Manager and PWD for Ph II	Inspect permitted construction sites for SWQ violations	Record inspections, violations and follow up work needed for SWQ and document for annual report. Level 1 – adopt ord. & document inspections Level 2 – raise contractors’ awareness to meet stormwater ord. Level 3 – require contractors to install BMPs. Level 4 – pollutants reduced by installation of BMP’s	Yes/Levels 1,2,3,4	FY 14 – See 7.4 FY 15 – See 7.4
7.6 Pollution Prevention in Municipal Operations Program	Stormwater System Maintenance (7.3.6)	RVSS Manager and PWD for Ph II	Implement maintenance activities and document.	Develop system to record maintenance activities and document for annual report. Level 1 – develop, implement and document installation & inspections Level 2 – raise staff awareness to meet procedure	Yes/Levels 1,2	FY 14 – <ul style="list-style-type: none"> • Central Pt – Zone B (See appendix B) was inspected and found to be free of debris so no cleaning was performed, an additional 12.3 miles of storm system known to accumulate was inspected and 29cy of debris was removed <ul style="list-style-type: none"> – entire city swept once a week removing 373 tons of material annually – Annual leaf pickup removed 88 tons of leaves • Talent – cleaned 50 storm drains and <ul style="list-style-type: none"> – swept 207 miles of street, – 58% of 24 stormwater features were maintained. – Storm pipe was maintained, but amounts were not recorded. • Phoenix – swept 19.5miles of street monthly removing a total of 60cy of material, <ul style="list-style-type: none"> – inspected 241 curb inlets and cleaned 180 removing 5 cy of material, – inspected 100 catch basins of which 59 were cleaned removing 3cy of material, – inspected 13 of 128 manholes and cleaned 13 removing 1cy of material, – removed 15 tons of leaves through the fall leaf program • Jackson County – Cleaned 175 pipes and inlets with, hydrovac. Removed 58 cy material, <ul style="list-style-type: none"> – swept road system as required and when resources permitted, prioritized roads with ADT over 1000, sweeping those more frequently; removed 550cy material. FY 15 – Continue to work with RVSS Ph II Communities to better document maintenance activities.
7.7 Pollution Prevention in Municipal Operations Program	Open Channel and Structural SW Controls (7.3.6.1)	RVSS Manager and PWD for Ph II	Implement maintenance activities and document when permit is issued.	Develop system to record maintenance activities and document for annual report. Same as 7.6	Yes/Levels 1,2	FY 14 – Maintain records of maintenance activities: <ul style="list-style-type: none"> • Central Pt- requires residents to keep creeks clear of veg. & debris. • Phoenix – mows vegetation in open channels, maintains stability of banks and provides vegetation filter, no activity in 2014 • Jackson Co. – nothing to report • Talent – nothing to report FY 15 – Continue to work with RVSS Ph II Communities to document maintenance activities.

Stormwater Implementation “Program-at-a-Glance” FY 2014

Program Area	Regional Guide Measures	Responsible Party	Implementation Tasks from SWMP	Measurable Goals/Effectiveness (Levels 1 to 5 from CASQA)	Goal(s) Achieved?/ Levels 1,2,3,4,5	Accomplishments, proposed changes and plans for the coming year
7.8 Pollution Prevention in Municipal Operations Program	Road, Highway and Parking Lot Maintenance (7.3.6.2)	RVSS Manager and PWD for Ph II	Implement maintenance activities and document when permit is issued.	Develop system to record maintenance activities and document for annual report. Same as 7.6	Yes/Levels 1,2	FY 14 - Phase II communities documentation: <ul style="list-style-type: none"> Street sweeping – Central Pt = 373 tons, Phoenix = 60 CY, Talent = swept 2.07 miles of street and JC = 550 CY Deicer – JC = 35 gal/road mile on arterials & major collectors, Winter Sanding – JC = 350 CY on arterials & major collectors CP initiated an Adopt a Street Program- 22 adopted streets totaling 14.68 miles – volunteers to clean at least 4 times per year. FY 15 – Continue to work with RVSS Ph II Communities to document maintenance activities
7.9 Pollution Prevention in Municipal Operations Program	Flood Maintenance Projects (7.3.6.3)	RVSS Manager and PWD for Ph II	Report annually capital expenditures for SWQ Improvements	Develop system to record flood management projects and document for annual report. Implement system for flood management project evaluation and review procedures per O&M Plan: <ul style="list-style-type: none"> Central Pt, Jackson County and Talent will review flood management projects for opportunities to include SWQ. Phoenix – Continue to implement SW Master Plan Level 1 – document maintenance & flood management work Level 2 – raise staff' awareness	Yes/Levels 1,2	FY 14 – RVSS designed a stormwater wetland restoration in Talent to alleviate flooding of streets upstream of a stormwater wetland that had filled with sediment. FY 15– RVSS will carry out wetland restoration construction of a stormwater wetland in Talent.
7.10 Pollution Prevention in Municipal Operations Program	Employee Training on O&M Implementation (7.3.7)	RVSS Manager and PWD for Ph II	Train staff responsible for O&M procedures	Document and report the number of hours spent on training. Level 1 –document staff training Level 2 – raise staff' awareness	Yes/Levels 1,2	FY 14 –see 5.2. <ul style="list-style-type: none"> JC also provided two hour training to 43 employees on their new stormwater operations and maintenance guide. FY 15 –Continue to train staff from Ph II Communities as needed.
8.0 Evaluation and Assessment	Meet Permit Requirements	RVSS Manager and SW Program Coordinator for Ph II	Prepare annual report for NPDES permit	Meet Phase II requirements as outlined in the Measurable Goals of each permit requirement. Level 1 – document Phase II activities Level 2 – raise DEQ's knowledge of RVSS' Program	Yes/Levels 1,2	FY 14–Submit annual report for Phase II and 1200C programs in accordance with DEQ requirements. FY 15–Continue to submit annual reports in accordance with DEQ requirements.



RVSS Erosion and Sediment Control Inspector Training



RVSS Erosion and Sediment Control Inspector Training