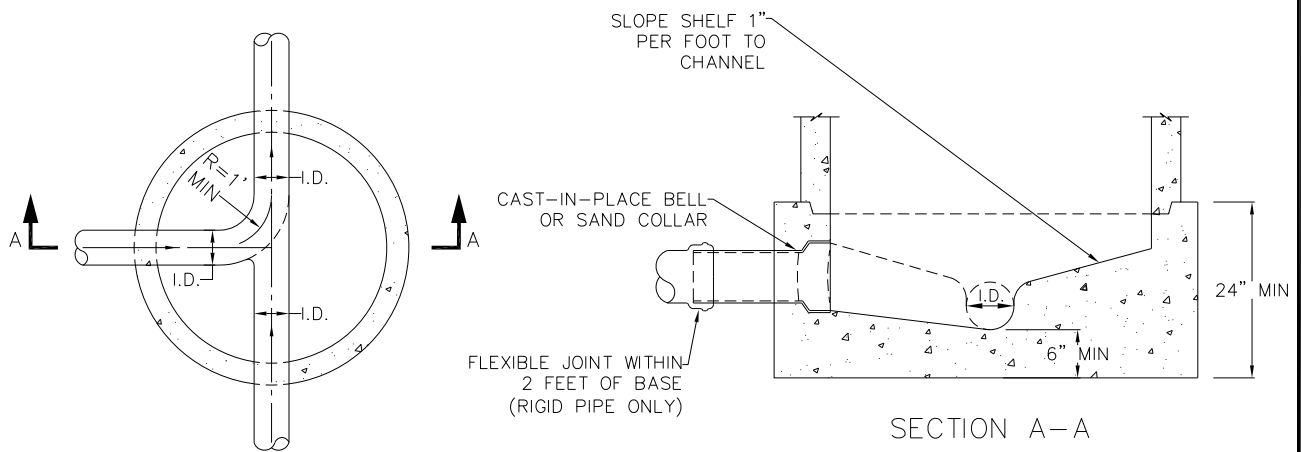


- NOTES:
1. DETAIL APPLIES FOR MANHOLES UP TO 15 FEET DEEP (RIM TO INVERT) AND PIPES UP TO 18" DIAMETER. SEE STANDARD DETAIL 6-15 FOR LARGE PIPE AND/OR DEEP MANHOLES.
 2. ALL CONCRETE SHALL BE 'COMMERCIAL GRADE CONCRETE'.
 3. MANHOLES SHALL MEET REQUIREMENTS OF ASTM C478.
 4. CHANNELS SHALL MATCH THE INVERT OF THE PIPE TO SPRINGLINE, AND EXTEND VERTICALLY TO THE CROWN OF THE PIPE.

STANDARD MANHOLE



CONNECTION DETAILS



ROGUE VALLEY
SEWER SERVICES

138 WEST VILAS ROAD CENTRAL POINT, OR.

STANDARD MANHOLE AND CONNECTION
DETAILS

Rev.6/10
Rev. 12/2015
Rev. 6/2016
Rev. 1/2019

STANDARD
DRAWING
NO.
6-1
DATE: 6/10